

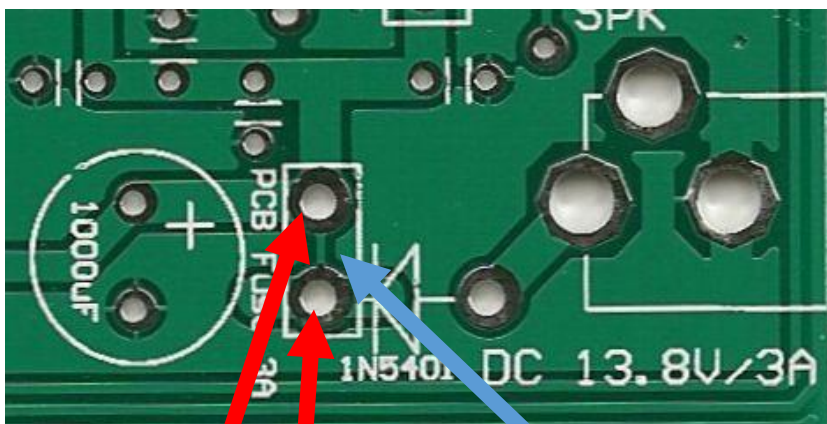
# CS-Series Application – On/Off Switch



**Method #2:** Rather than cutting out the fuse, cut the wire on the diode: between the PCB hole and the top of the diode. (One wire of diode goes to switch. The hole where the diode should go now goes to the other pole on the switch.)

- Prepare switch by connecting two wires to switch.
  - Switch should be capable of at least 3 A of current. (5 A would be better)
  - Solder one lead to PCB hole.
  - Solder other wire to the Diode.
- Drill hole in back plate where you want to place switch.
  - Remount the back plate as shown.

**Original Method #1:** Prepare the PC board as shown:



- Use ohm meter to verify that the fuse has been removed. (No continuity between the diode and other hole).

This trace acts as a fuse. If you would like to add a switch, cut this trace.

Solder one wire of switch to both locations shown.